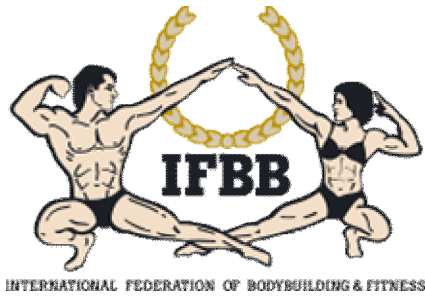


68th IFBB Men's World Amateur Bodybuilding Championships and International Congress



12nd to 16th November 2014
Brasília, Brazil

Inspection Report



Welcome

The Organizing Committee of the Brazilian Bodybuilding Federation takes this opportunity to welcome all National Federations of the world to participate in the 68th IFBB Men's World Amateur Bodybuilding Championships and International Congress in Brasília, Brazil, **Wednesday 12nd to Sunday 16th November 2014.**

About Brasília

Brasília was built in four years, from 1956-1960. The city was prophesied by Dom Bosco in the century XIX, and implemented by President Juscelino Kubitschek (JK) in the century XX as a result of his determination.

The Federal Capital, listed at the UNESCO World Heritage Site, is one of the main tourist and events destinations in South America and stands out as the 3rd Brazilian city in number of international events in 2012, according to the International Congresses and Conventions Association - ICCA.

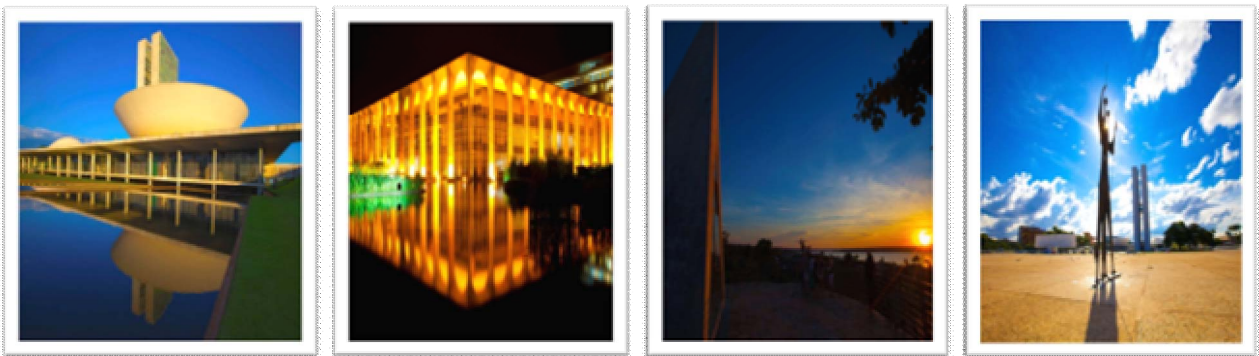
With privileged location in the center of Brazil and South America, has the third largest airport in number of passengers with a large domestic and international network .

The city offers a rich variety of equipment and events venues. In addition is the third largest gastronomic center of Brazil, with excellent restaurants and bars ready to attend the expectations of the most demanding customers.

It has the advantage of hosting the Federal Public administration, sheltering the largest number of officials and politicians in the country.

The single urban plan of Brasilia is divided in sectors: Hotel Sector, North and South Local Government Sector, North and South Embassies Sector, Commercial Sector North and South, resulting in short distances, smooth traffic which is important for meeting planners.

It's modernist buildings with original design identified by large avenues, few crossovers and traffic lights, as well as the concentration of residential centers, hotels, malls, hospitals, banking, entertainment, among others, allow quick and easy access in journeys made in Brasília, resulting in time savings on transport.



Venue

ULYSSES GUIMARÃES CONVENTION CENTER - BRASILIA

SDC, South Wing, 1º floor



Official Hotel

The official hotel is **Kubitschek Hotel**

Nothern Hotel Sector

SHN, Block 2, E (<http://www.kubitschek.com.br/localizacao>)



Accommodations

The organizing committee will provide free-of-charge accommodations for four (4) nights and three (3) meals per day for all official participants (athletes & delegates) from the national federations according to the following IFBB rules:

- Three or more competitors: two delegates permitted.
- Two competitors or less: only one delegate is permitted.

National federations with no competitors may send one (1) delegate who will be responsible for all of his or her own expenses.

The term "Official Participant" means 1) an Athlete who is duly authorized by his national federation and who is registered by the IFBB to compete in the Championships, and 2) a Delegate who is duly authorized by his national federation and who is registered by the IFBB to participate in the Championships pursuant to the IFBB rules.

Official arrival date is November 12th 2014 (Wednesday) and the official departure date is Sunday 16th November 2014

IMPORTANT NOTICE: All National Team Official Participants (athletes and delegates) must check in **BEFORE** the start of the Technical Meeting. Any Official Participant not checked in by this deadline will be classified as an extra delegate and will be responsible for all his/her expenses.

Any judge, coach, or trainer who is not an Official Participant will be responsible for all his expenses. If your National Federation wishes to bring a judge, a coach or a trainer, it is recommended that your Federation nominate this individual to be an Official participant for your Federation; otherwise, these individuals will be responsible for all their own expenses. The same rule applies for family members. **NO EXCEPTIONS WILL BE MADE UNDER ANY CIRCUMSTANCES.**

Hotel security deposit

A hotel security deposit of 100 Euros per person is required upon check-in for incidental and personal expenses that may arise (telephone, mini-bar, laundry, etc.). The unused portion of this deposit will be refunded at check-out in the same currency as remitted.

In order to facilitate matters, the chief delegate or team leader will be asked to provide a credit card or cash to cover the deposit for the entire team. This individual will be fully responsible for all expenses incurred by any member of his/her team.

IMPORTANT NOTICE: You must pay the Hotel Security Deposit and IFBB Registration Fee **BEFORE** your team members are provided accommodations. If any of your athletes or delegates arrives in Brasilia without their Team manager or Chief Delegate, that athlete or delegate must pay the Hotel Security Deposit and the IFBB Registration Fee **BEFORE** a room can be assigned.

Special packages rates for extra delegates, supporters, media & others

The organizing committee has established a full special package rate, which includes four (4) nights' accommodations with three (3) meals per day (breakfast, lunch & dinner), tickets to the prejudging & finals, tickets to the farewell banquet, and onsite transportation at a special cost.

- For single room €700,00
- For Double room €600,00 per person
- For triple room €500,00 per person

IFBB Registration Fees: Each athlete (both A and B team) and Official Delegate must pay the IFBB registration fee of 150.00 Euros each (Three or more competitors: two Official Delegates allowed. Two competitors or less: only one Official Delegate is allowed). This fee is payable to the IFBB upon arrival at the official Hotel in Brasilia. The IFBB registration fee is completely separate from the hotel security deposit. Athletes who have not yet obtained the IFBB International Card will have to pay 180.00 Euros, which includes the international card (€30,00) and the registration fee (€150,00).

Airport The official arrival airport is Juscelino Kubitschek President – International Airport (BSB) in Brasília. The organizing committee will pick you up at the international airport on arrival and transport you to the official hotels. It is very important that every national federation provide to the organizing committee the complete arrival & departure details of its team, including the number of people in each delegation. Your cooperation is essential to ensuring adequate transportation for your team.

Early arrivals & late departures Any national federation, including any of its individual team members, arriving before the **official arrival date of November 12th and/or staying after the official departure date of November 16th 2014** will be responsible for all of their expenses, including arranging their own transportation between the airport and the hotel. Accommodations before the official arrival date and after the official departure date will be approximately 300 Euros per day per room for twin bedded lodging and 250 Euros per day per person for single bedded room. You must notify the organizing committee of any early arrivals and/or any late departures.

Flight reconfirmation

To reconfirm your flight to and from Brasília, please contact the secretariat within 24 hours before your departure.

Bodyweight categories

Flyweight Up to & Incl. 60kg (132 lbs)
Bantam weight Up to & Incl. 65Kg (143 lbs)
Light weight Up to & Incl. 70Kg (154 lbs)
Welter weight Up to & Incl. 75Kg (165 lbs)
Light-Middle weight Up to & Incl. 80Kg (176 lbs)
Middle weight Up to & Incl. 85Kg (187 lbs)
Light-Heavy weight Up to & Incl. 90Kg (198 lbs)
Light-Heavy weight Up to & Incl. 95Kg (198 lbs)
Heavy weight Up to & Incl. 100Kg (220 lbs)
Super-Heavy weight Over 100Kg (220 lbs)

- a) National federations will be permitted to enter an "A" team of up to a maximum of nine (9) athletes with no more than two (2) athletes in the same weight category.
- b) Each National Federation may enter a "B" team according to the rules specified below. The maximum allowable number of competitors in the "B" team is 9.

The National Federation shall be obliged to pay the Extra Package Rate for each "B" team competitor. This package shall comprise of the competitor's accommodation, meals, onsite transportation, and access for Prejudging, Finals and Farewell Banquet.

The "B" team competitors shall compete for placing and awards, excluding the Best National Team award.

A National Federation must fully declare its "B" team competitors on the Final Entry Form and must register the "B" team competitors upon check-in the official hotel, failing which any undeclared competitor shall be disqualified.

Athletes and Team Managers Meeting

There will be an Athletes and Team Managers Meeting before the **Weigh-in on Thursday November 13th at 4:00 pm.**

All athletes will be obliged to attend this meeting.

Secretariat

The organizing committee will manage a Secretariat at the official hotel **from Wednesday 12th November 8:00am to 4:00 pm on Sunday 16th November.** You may obtain information and assistance from the Secretariat.

Parade of the nations

The mandatory dress code for all delegates participating in the Parade of Nations will be IFBB attire, e.g. black dress shoes, grey dress pants with shirt, IFBB tie and blue blazer with the IFBB crest. No delegates will be permitted in the Parade of Nations wearing sports clothes and sports shoes.

Camera / video tape equipment

Cameras and/or video tape equipments shall be strictly prohibited in the backstage and/or dressing room areas except when used by the IFBB authorized media person and, in any event, these devices shall be strictly prohibited in the dressing room area.

Posing music

All posing music must be on an audio CD only. The posing music must also be at the start of the CD. Each competitor must affix his name on the CD for easy identification.

IMPORTANT: THE USE OF PROFANE, VULGAR AND/OR OFFENSIVE LANGUAGE IS STRICTLY PROHIBITED IN POSING MUSIC

Judges

In order to assist the judges committee in their selection of the judges at the world championships, please forward your nominations for judges from your federation as soon as possible to:

Mr. Pawel Filleborn Chairman, IFBB Judges Committee Email: pawelfilleborn@gmail.com

The names of those judges submitted in advance will receive priority consideration. All international judges must bring their international cards to Brasilia.

PLEASE DO NOT FAX YOUR NOMINATIONS TO THE IFBB HEADQUARTERS

IMPORTANT NOTICE: All judges who wish to be included in the judges panels at these championships should be specified on the Final Entry Form. The test judges should also be specified on the Final Entry Form. If any judges do not attend the Judges Meeting, they will not be permitted to judge.

Green cards

Green cards are used to limit access to the weigh-in and backstage area during the prejudging & finals. They will be distributed at the judges/team managers meetings as follows:

Five (5) or more athletes – two (2) green cards.

Less than (5) athletes – one (1) green card.

Doping Controls

Doping controls will be conducted by the IFBB Anti-Doping Commission pursuant to the IFBB Anti-Doping rules, using a WADA accredited laboratory. In order to compete in the championships, all

competitors at the weigh-in and registration will be required to sign a Drug Testing Consent & Waiver of Liability Form **(available in the appendix)**.

Doping controls may be conducted using any of the following methods:

- Random Selection: A number of athletes selected at random throughout the event e.g. at weigh-in.
- Weighted Selection: A number of athletes selected at random from among the top finalists e.g. at finals.

The IFBB reserves the rights to target test any athlete.

The IFBB is a signatory to the WADA code. Participating national federations have a duty and an obligation to ensure that their national team athletes are competing drug-free at IFBB international competitions.

Visas

A valid passport is required for entry into Brazil. Please contact the embassy of Brazil in your country to determine if you need a visa. An official letter of invitation will be made available, if required.

Time difference

Time in Brasília = GMT-3.

Currency

The official currency of Brasília is the Real (R\$)

approx R\$ 1,00 = 0,45 US Dollar

approx R\$ 1,00 = 0,33 Euro

Credit cards

International credit cards such as Visa, MasterCard and American Express are widely accepted at most major hotels, stores & restaurants. You may be requested to show your passport.

Climate

In November the average temperature is 26,6 °C

Electrical current

110 Volts

Language

The main language is Portuguese.

Media accreditation

All media accreditation, except local media, shall be controlled by the IFBB. All persons wishing to obtain media accreditation for this event must register with the IFBB by completing and signing an IFBB media accreditation form. You may contact the IFBB press commission to obtain this form: amichalak5@gmail.com

Attendance at the IFBB International Congress

It is the duty and responsibility of each national federation to ensure that it is represented at the IFBB International Congress meeting. All national federations officially participating in the championships must also attend the congress, including national federations with athletes and no delegates. In this case the athlete must attend and represent his country at the Congress.

Athletes without delegates

All athletes competing at the IFBB World Championships must be members in good standing of their national federations. Any athlete who arrives without a delegate must carry an **OFFICIAL LETTER OF PARTICIPATION** from his national federation, failing which the athlete will not be allowed to participate.

Misrepresentation

Misrepresentation is a serious breach of the **IFBB CODE OF ETHICS** and occurs where an "official" of a National Federation deliberately misrepresents the number of athletes and delegates so as to obtain free of charge accommodations, meals, onsite transportation, access to the prejudging, finals, and farewell banquet, and other amenities at the expense of the Organizer. Part of this misrepresentation may be a false claim that a person is an athlete only to have that so-called athlete fail to officially register as a competitor at the weigh-in or, once having officially registered, fail to compete. Any national federation found guilty of misrepresentation will be immediately disqualified from the championships and will be fined an amount equal to the Special Package Rate for each person involved.

Preliminary Entry Form (PEF)

The deadline for the Preliminary Entry Form **(available in the Appendix) is XXXXX of 2014** . National Federations must return the Preliminary Entry Form to the Organizing Committee as soon as possible but not later than deadline date, confirming your federation's intent to participate. If at this time you do not know the actual names of the Official Participants (athletes and delegates, including judges), please indicate the total number of individuals from your National Federation who will participate in the Championships.

Final Entry Form (FEF)

The deadline for the Final Entry Form is **(available in the Appendix) is Friday 31st October 2014** . National Federations must submit the actual names of all Official Participants (Athletes by discipline and

category, Delegates, including judges). You must also include arrival and departure information. In order to guarantee hotel accommodations for your team, the Final Entry Form must be returned not later than the deadline date. Your cooperation is essential to ensuring your accommodations at the hotel and adequate transportation for your team.

IF THE FINAL ENTRY FORM RETURNS TO THE ORGANIZING COMMITTEE AFTER 31st OCTOBER, THEN THIS NATIONAL FEDERATION WILL HAVE TO PAY THE FULL PACKAGE IN A DOUBLE ROOM OR IN A SINGLE ROOM FOR EACH MEMBER OF ITS NATIONAL TEAM (ATHLETES AND DELEGATES) INSTEAD OF THE REGISTRATION FEE.

Medical Withdrawal

Once officially registered, no athlete may withdraw from competition without the prior approval of the IFBB chief judge. It is not accepted for a national federation to unilaterally withdraw an athlete without prior approval of the IFBB chief judge, who has the right to verify the reason for the withdrawal.

Please send all correspondence to:

Brazilian Bodybuilding and Fitness Confederation

Organizing Committee

Address : Rua Ezequiel Freire, nº 55, sala 51 – Santana – São Paulo/SP

Tel : +55 (16) 9.8176-1300

Email : secretaria@ifbbbrasil.com.br; mauricio1@santonja.com

Website : www.ifbbbrasil.com.br

Prof. Mauricio de Arruda Campos, President

Please copy all correspondence to:

IFBB Head Office - Madrid, Spain

Phone: +34 91 535 2819

Fax: +35 91 535 0320

E-mail: headquarters@ifbb.com

And:

Wanda Tierney

IFBB Liverpool Office

E-mail: wanda.tierney@ifbb-uk.com

68th IFBB Men's World Amateur Bodybuilding Championships Brasília, Brazil 12nd – 16th November 2014

Tentative Schedule

Tuesday, 11th November 2014

7.00 am – 7.00pm **Arrival of the IFBB Executive Council Members**
8.00 pm **Dinner for the IFBB Executive Council Members**

Wednesday, 12th November 2014

7.00 am – 7.00pm **Arrival of delegates and competitors Registration and Check-in**
12.00 pm – 3.00pm **Lunch**
3.00 pm **The IFBB Executive Council Meeting**
7.00 pm **Welcome Dinner**

Thursday, 13th November 2014

7.00 am – 9.30 am **Breakfast**
12.30 pm – 3.00pm **Lunch**
3:00 pm **Technical Meeting**
4:00 pm **Team Managers and Athletes Meeting**
5:00 pm **Weigh-in, Registration**
8:00 pm **Dinner**

Friday, 14th November 2014

7.00 am – 9.00am **Breakfast**
10.00 am **Prejudging**
7.00 pm – 9.pm **Dinner**

Saturday, 15th November 2014

7.00 am – 9.00am **Breakfast**

8.30 am	The IFBB Annual Congress
----------------	---------------------------------

12.00 pm – 2.00pm **Lunch**
3.00 pm **Finals**
9.00 pm **Farewell Banquet**

Sunday, 16th November 2014

7.00 am – 10.00am **Breakfast**
12.00 Noon **Departures**